



VAJIRAM & RAVI
Institute for IAS Examination

The Analyst

CURRENT AFFAIRS Handout

20th June 2026



CONTEXT: RSS leaders advocating P2P ties.

India-Pak Ties: Timeline

1. Phase of Active Aggression (1947–2001)

- **1947–48 Kashmir War:** Pakistan captured PoK
- **1965 War:** UN-mandated ceasefire; Tashkent Agreement (1966)
- **1971 War:** East Pakistan liberation; Shimla Agreement (1972)
- **Siachen Conflict (1984):** India's Operation Meghdoot
- **1980s–90s:** Pakistan fuels Kashmir insurgency
- **1998:** Both countries nuclear tests
- **1999 Kargil War:** Pakistan infiltrates LoC; India regains territory
- **2001 Parliament Attack:** LeT & JeM strike

2. Phase of Reconciliation (2001–2008)

- **1999 Lahore Declaration:** CBMs e.g., missile test warnings
- **Vajpayee's Doctrine:** *Insaniyat, Jamhooriyat, Kashmiriyat* for peace
- **2004 SAARC Summit:** Pakistan pledges no anti-India terror from its soil
- **2008 TAPI Pipeline:** India joins
- **2008 Mumbai Attacks:** LeT-led strikes

3. Phase of Passive Bilateralism (2008–2015)

- **Post-Mumbai Suspicion:** Dialogue limited; focus on terror accountability

- **2014 "Neighborhood First" Policy:** India prioritizes SAARC engagement
- **Goodwill Gestures:** Fishermen released, Pakistan PM attends Modi's oath (2014)
- **2015 Modi Visit:** First Indian PM visit to Pakistan in a decade

4. Phase of Renewed Aggression (2015–)

- **CPEC Launch (2015):** through PoK
- **Terror Wave (2015–19):** Pathankot, Uri, Pulwama attacks
- **Indian Responses:**
 - 2016 Surgical Strikes (post-Uri)
 - 2019 Balakot Airstrike (post-Pulwama)
 - MFN status revoked
- **Article 370 Abrogation (2019):** Pakistan downgrades ties
- **Operation Sindoor**

Repercussions of The Tussle

1. Limited Economic Integration

- **Trade**
 - a. Just \$1.2 bn
 - b. WB, 2018: *A Glass Half Full: The Promise of Regional Trade in South Asia*
 - c. Tariff & Non-tariff barriers
- **Terror-impacted trade:** post-Pulwama drop

2. Stalled Regional Integration

- **Intra-regional trade:** 5% in SA vs. 50% in EA
- **SAARC & SAFTA**



20th June, 2026

CONTEXT: RSS leaders advocating P2P ties.

3. Costly Arms Race

- **India's defense spending:** \$83 billion (2.4% of GDP) in 2023 –SIPRI
- **Pakistan's military burden:** 3.6% of GDP
- **Nuclear risks**

4. Hinders India's Strategic Interests

- **Blocks regional engagement:** Limits India's influence in CA, Afghan, WA
- **Pakistan's geopolitical leverage:** Key for US (Afghanistan), China (CPEC), Russia (energy routes)

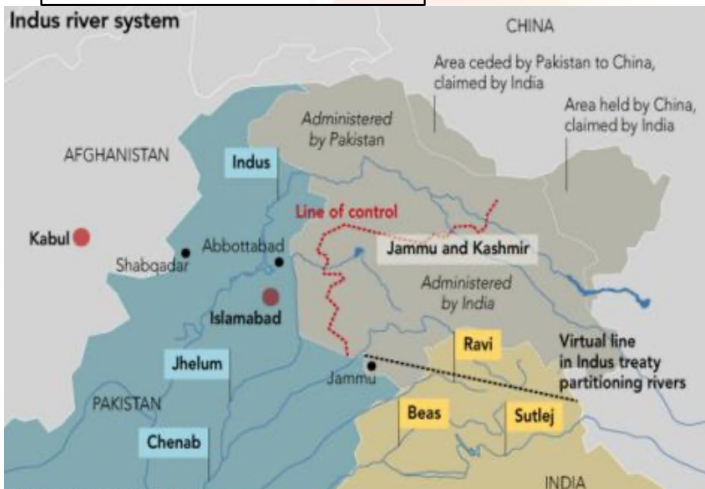
5. Internationalization of Disputes

- **Pakistan's propaganda:** Raises Kashmir in UN, OIC

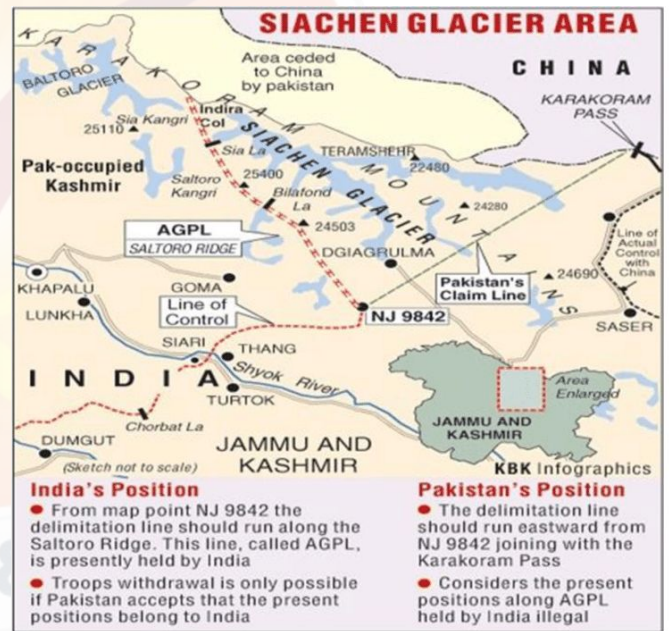
6. Peripheral but Persistent Issues

- Fishermen arrests
- Drug smuggling: Golden Crescent (Af-Pak-Iran)
- Fake currency

Gilgit Baltistan



● **Siachen**

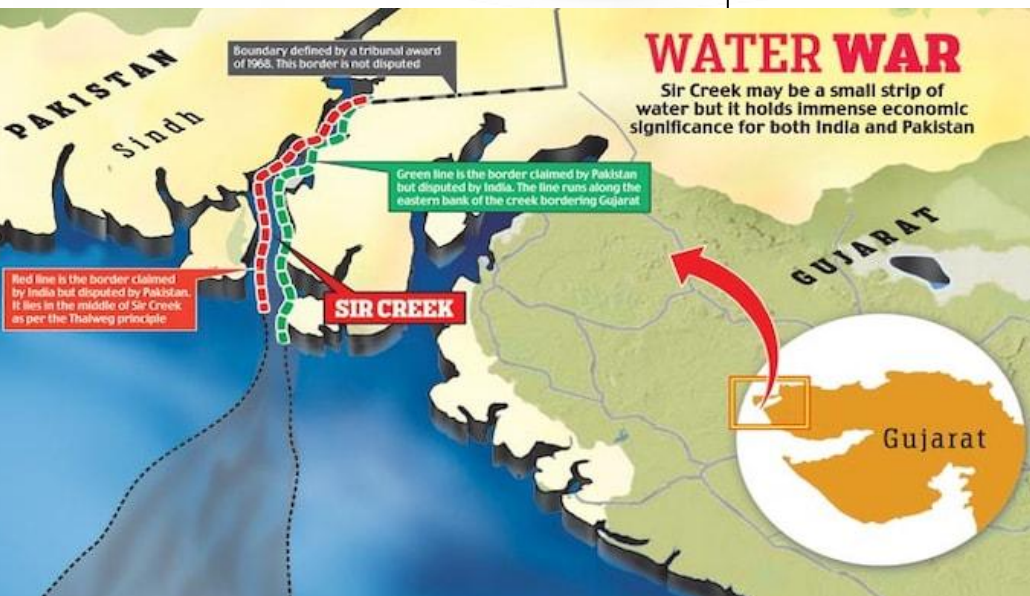


India's Position

- From map point NJ 9842 the delimitation line should run along the Salto Ridge. This line, called AGPL, is presently held by India
- Troops withdrawal is only possible if Pakistan accepts that the present positions belong to India

Pakistan's Position

- The delimitation line should run eastward from NJ 9842 joining with the Karakoram Pass
- Considers the present positions along AGPL held by India illegal



● **Sir Creek**



CONTEXT: RSS leaders advocating P2P ties.

- **Trade**

- MFN & Negative List
- Imports through Wagah border
- Trade Surplus
- Pause after August 2019

- **Why Pakistan wants to resume trade?**

- Surging Quietly
- Economic crisis in Pakistan
- Approaching IMF and friendly countries for loan
- Indirect routes via Dubai, Singapore, or Sri Lanka
- Pakistan's relationships with Afghanistan and Iran

- **Challenges to normalisation of trade**

- Hardliners
- Role of Pakistani Army
- Pakistan's demand on Article 370
- Terrorism
- Air space use denial
- Land route for wheat to Afghanistan

India-Pak: How to get back on Track?

- **Suggestions**

- Build a "security community" in SA
- Dialogue, CBMs like prisoner exchanges, sporting visas, religious pilgrimage
- Bajwa doctrine - peace, reconcile with neighbours, economic growth, trade, rebuild ties with US
- Backchannel diplomacy
- Soft power diplomacy

MAINS PRACTISE QUESTION

India-Pakistan relations continue to be shaped by unresolved border disputes and limited economic engagement. Examine the challenges arising from border disputes and trade restrictions between India and Pakistan. Suggest measures for improving bilateral relations while safeguarding India's national interests.



CONTEXT: Glacial Lakes in Arunachal Pradesh are expanding.

Cryo-Hydrological Hazards

- GLOFs
- Ice-Patch Collapse
- Rock-Ice Avalanches
- Permafrost Landslides

Factors

Natural Factors

- Tectonic Fragility
- Nivation Instability
 - Srikanta Glacier >> 2025 Dharali flood
- Extreme Weather
 - Heavy rain, cloudbursts, avalanches >> destabilise glaciers

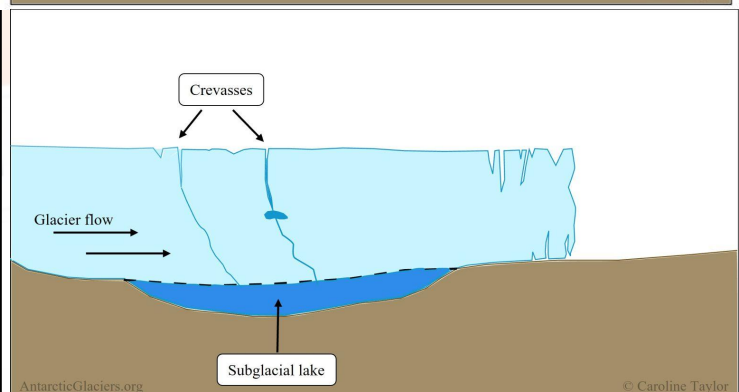
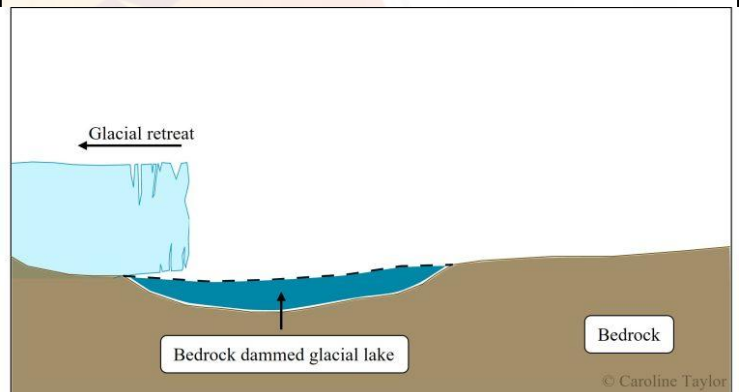
Anthropogenic Factors

- Global warming
 - South Lhonak Lake in Sikkim
- GHG emissions
 - Temperature rise, destabilising glaciers, meltwater accumulation
- Linear Infra: Tourism, hydropower, roads

Glacial Lakes

- body of water that originates from a glacier
- Usually at the foot of a glacier, but may form on, in, or under it.
- ISRO categorised
 - Moraine-dammed
 - Ice-dammed
 - Erosion-based
 - others

- Dams formed by moraines - dense and stable, holding sizable lakes behind them for years
- Leaky - lake drain slowly into nearby rivers
- crucial sources of freshwater for rivers
- Risks of GLOFs
 - release large volumes of meltwater due to failure of natural dams



IIT Roorkee study

- > 31k glacial lakes growing in High Mountain Asia
 - a. Area increase of 5.5%
- Highest area in Eastern Himalaya



CONTEXT: Glacial Lakes in Arunachal Pradesh are expanding.

Causes of GLOFs

- Global warming
 - Glacier melting and retreat
 - Expansion of lake beyond capacity
 - i. Number, area, volume up by 53%, 51%, & 48%
- Glacial Surging
 - Gilkey Glacier, Alaska
- Structural Failure
 - Unstable moraines breach
 - Internal erosion, hydrostatic pressure, thawing permafrost
 - i. South Lhonak GLOF, Sikkim
- Mass Movement >> displacement waves
 - 2021 Chamoli GLOF.
- Cascading Events: Earthquakes
- Anthropogenic
 - Urbanization, mining, deforestation, hydro projects
 - Drainage patterns, stability of slope

Mitigation Strategies

- National GLOF Risk Mitigation
 - Hazard Assessment
 - EWS
 - Risk Mitigation
 - Technology: SAR Interferometry for slope stability
- ISRO satellite Mapping, NDMA
- CWC monitors
 - Risk Indexing of Glacial Lakes
- Early Warning Systems
 - sensors detect sudden water level changes

- Automatic Weather Stations in Sikkim
- Scientific Surveys
 - Bathymetry & Slope
- Structural Engineering
 - Siphoning or pumping water out
 - Artificial spillways to control discharge
- Global Initiatives
 - Transboundary Cooperation: data sharing
 - i. Sendai Framework for DRR
 - Community-Based DRR: Training local "first responders"

Challenges

- Data: Remote >> inaccessible
 - altitude and terrain
- Post-disaster data
- CC: accelerating glacial melt >> lake volume & pressure
- Gaps in automated monitoring, EWS, satellite imaging
- Flash Floods: Silting

Suggestions

- Technology Investment: sensors for real-time monitoring
 - EWS - Challenge Fund
 - ISRO Glacial Lake Atlas
- GLOF Audits
 - Risk assessments using satellite in DPRs of hydro/road projects



Glacial Lakes Expansion



CONTEXT: Glacial Lakes in Arunachal Pradesh are expanding.

- Cross-Border Alert Systems
 - Real-time GLOF data-sharing with Nepal, Bhutan, China
- Structural
 - Dams; embankments
- Community Participation
 - Volunteer groups in remote areas - for monitoring, forecasting, emergency response
 - Local knowledge + scientific systems

MAINS PRACTISE QUESTION

Glacial Lake Outburst Floods (GLOFs) have emerged as a significant climate-induced disaster risk in the Himalayan region. Discuss the causes of GLOFs and its mitigation measures.



Walking on footpaths a fundamental right, rules Supreme Court

Walking on footpaths
a fundamental right,
rules Supreme Court

- Right to Walk
 - Right to movement u/ A 19(1)(d)
 - r/w A 19(1)(a), (b), (c) and A 21

Expansion of A 21

- Maneka Gandhi vs Union of India, 1978
- Olga Tellis v. Bombay Municipal Corporation, 1985
 - Right to Livelihood
- Subramaniam Swamy v Union of India
 - Right to Reputation

- Hussainara Khaton v. Home Secretary, State of Bihar, 1979
- Right to a speedy trial
- Justice K. S. Puttaswamy (Retd.) vs Union of India, 2017
- Subhash Kumar v. State of Bihar, 1991
 - Right to clean water and air
- M.C. Mehta v. Union of India
 - Right to a clean, healthy, and pollution-free environment
- D.K. Basu v. State of West Bengal
 - Custodial torture and violence violate A21
- Common Cause v. Union of India, 2018
 - Right to die with dignity
- Sunil Batra v Delhi Administration
 - Prisoners dignity



SYLLABUS: Prelims: Current Events of National and International Importance
Newspaper : The Indian Express; **Page No : 14**

INS Dunagiri

- 5th ship of Nilgiri Class (Project 17A)
- Designed by Warship Design Bureau
- Built at GRSE
- Diesel engine and a gas turbine >> drive a Controllable Pitch Propeller
- Armaments
 - a. BrahMos SSM
 - b. MFSTAR
 - c. MRSAM complex
 - d. 76mm SRGM
 - e. Rocket and torpedoes for anti-submarine warfare

Sanshodhak Survey Vessel

- 4th Survey Vessel (Large)
 - INS Sandhayak
 - INS Nirdeshak
 - INS Ikshak
- Role
 - Coastal and deep-water Hydrographic survey of port/Harbour approaches
 - Determination of navigational channels/ routes
 - Collecting oceanographic and geophysical data for defence and civil applications
- Features
 - Hydrographic equipment: Data Acquisition and Processing System, Autonomous Underwater Vehicle, Remotely Operated Vehicle, Digital Side Scan Sonar

- Propulsion: 2 diesel engines
- Speeds > 18 knots
- Indigenous content >80% by cost

Agray

- 4th of 8 Anti-Submarine Warfare Shallow Water Craft
- Indigenously designed and built by GRSE
- Erstwhile INS Agray: 1241 PE Class of Patrol Vessels, decommissioned in 2017
- Features
 - Waterjet propulsion—largest Indian naval warships to use it
 - Armaments
 - i. Lightweight Torpedoes
 - ii. Indigenous Rocket Launchers
 - iii. Shallow water SONAR
 - Sensors: Advanced shallow water SONAR systems
- Significance
 - Indian Navy's anti-submarine and mine-warfare capabilities
 - Coastal surveillance



SYLLABUS: Prelims: Current Events of National and International Importance
Newspaper : The Hindu; **Page No :** 10

What is Sickle Cell Anaemia (SCA)?

- Shape of RBC - RBC contain hemoglobin
- SCD - hemoglobin is abnormal, RBC become hard and sticky and look like a C-shaped farm tool

What happens in SCA?

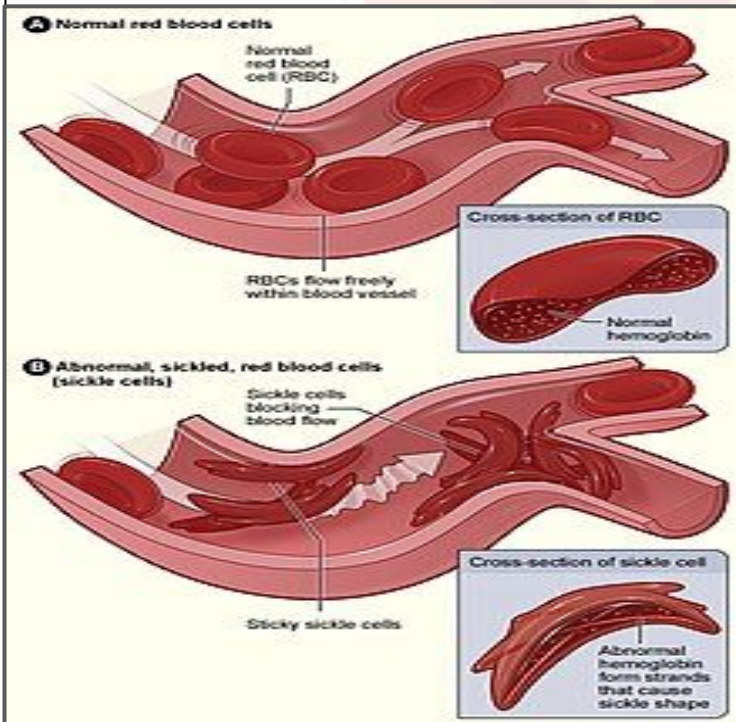
- Round RBC move easily through blood vessels
- Sickle RBC slowing and even blocking, the blood flow
- sickle cells die early - shortage of RBC, deprive the body of oxygen
- obstructions and shortages may cause chronic anaemia, pain, fatigue, stroke

Can SCA be treated?

- Genetic disorder
- Gene therapy (DNA inside haemoglobin gene edited) and stem cell transplants (bone marrow replacement) – costly, still in developmental
- Blood transfusion - RBC
- **Challenges**
 - scarcity of donors
 - safe supply of blood
 - risk of infection
- **Birsa-101 therapy**
 - Gene editing tool
 - Corrects mutations in the genetic code
 - Developed by CSIR- Institute of Genomics and Integrative Biology

National Sickle Cell Anaemia Elimination Mission:

- **Union Budget 2023-24** : mission to eliminate sickle cell anemia by **2047**
- **Awareness and screening programs** for people **ages 0 to 40**.
- **India's tribal belt** (Odisha, Jharkhand, Chhattisgarh, Madhya Pradesh, Maharashtra).
- **Vital medicines like hydroxyurea** in the essential medicines list



SYLLABUS: Prelims: Current Events of National and International Importance
Newspaper : The Hindu; **Page No : 10**

FATF

- independent intergovt body
- Develops policies against ML & FT
- 40+9 Recommendations as global AML & CFT standard
- Established in 1989 G7 Summit in Paris: AML
- 2001 mandate expanded: CFT
- Headquarters: Paris, France
- Members:
 - 39 countries: US, India, China, KSA, UK, Germany, France, EU
 - India member in 2010
 - >180 countries affiliated through a network of FATF-style regional bodies
- Functions
 - Researches how ML & FT
 - global standards to mitigate risks
 - assesses countries action
 - reports to raise awareness: techniques
- Member: must endorse FATF reco, evaluated by other members
- Repeatedly fail to implement FATF Standards
 - Grey and black lists
- Black List: Non-Cooperative Countries or Territories
 - support ML & FT
- Grey List: Safe haven for supporting ML & FT
 - as a warning >> may enter blacklist
- Consequences of being on blacklist
 - No financial aid by IMF, WB, ADB, EU
 - International economic and financial restrictions and sanctions



SYLLABUS: Prelims: Economic and Social Development

Newspaper : The Indian Express; **Page No : 21**

- Monetary policy
 - Use of monetary instruments >> regulate interest rates, money supply, credit availability
- RBI responsibility
 - RBI Act, 1934
- Primary objective: price stability for sustainable growth
- 2016 amendment to RBI Act, 1934
 - statutory basis for implementation of flexible inflation targeting framework
 - inflation target to be set by Govt, in consultation with RBI, once in 5 years

MPC

- constituted by central govt under Section 45ZB
- Function: fixing repo rate
- replaced Technical Advisory Committee
- Composition
 - 6 members: RBI Gov (Chairperson), Deputy Gov in charge of monetary policy, 1 official nominated by RBI Board + 3 members represent Gov
 - External members office for 4 years
- Quorum: 4 Members
 - At least Gov or, in his absence, Deputy Gov (Member of MPC)
- Decisions on a majority vote
 - Tie: RBI gov second or casting vote
- Decision binding on RBI
- RBI's Monetary Policy Department assists in formulating
- Meet at least 4 times in a year



Q1. Consider the following statements:

1. The Siachen dispute is a high-altitude security issue.
2. The Sir Creek dispute has both land and maritime implications.
3. PoK remains central to the broader India–Pakistan territorial dispute.

Which of the following conclusions is best supported?

- a) These are unrelated border issues.
- b) Border disputes with Pakistan are all strategically important
- c) Only Siachen has strategic significance
- d) Sir Creek is a larger military issue than Siachen

Answer: b

Q2. Consider the following observations regarding Himalayan glaciers:

- I. Heavy rainfall events have increased in some regions.
- II. Several glacial lakes have expanded in area.
- III. Permafrost slopes have become increasingly unstable.

Which of the following inferences can be drawn from the above statements?

1. Multiple cryosphere-related hazards can occur simultaneously.
2. Hazard risks are influenced by both climatic and geomorphological processes.
3. Permafrost degradation reduces the probability of landslides.

Select the answer using the code given below.

- a) 1 and 2 only
- b) 2 and 3 only
- c) 1 and 3 only
- d) 1, 2 and 3

Answer: a

Q3. Which of the following pairs is NOT correctly matched?

- a) BrahMos – Surface-to-surface missile
- b) MFSTAR – Part of INS Dunagiri's armament suite

- c) MRSAM complex – Part of INS Dunagiri's armament suite
- d) Autonomous Underwater Vehicle – Primary weapon of INS Dunagiri

Answer: d

Q4. Consider the following statements regarding sickle cell disease management in India:

1. Hydroxyurea has been included in the Essential Medicine List up to the Sub-Centre level.
2. The mission covers screening in the 0–40 age group.
3. The mission was launched in 2023.
4. The mission is restricted to ten states.

How many of the above statements is/are correct?

- a) Only One
- b) Only Two
- c) Only Three
- d) All Four

Answer: c

Q5. Consider the following assertion:

Assertion: The Financial Action Task Force influences its formal membership.

Which of the following statements best supports the above assertion?

1. More than 180 countries are affiliated through FATF-style regional bodies.
2. FATF standards are treated as the global benchmark for AML/CFT.
3. Countries are evaluated by other members on implementation.

Select the correct option.

- a) 1 only
- b) 1 and 2 only
- c) 2 and 3 only
- d) 1, 2 and 3

Answer: d





VAJIRAM & RAVI

Institute for IAS Examination

A unit of Vajiram & Ravi IAS Study Centre LLP

9-B, Bada Bazar Marg, Old Rajinder Nagar,
New Delhi - 110060 • Ph.: 41007400, 41007500

New No. 62, P Block, 6th Avenue, Anna Nagar,
Chennai - 600040 • Ph.: 044-4330-2121

Visit us at : www.vajiramandravi.com